

Dudley Advance II

The Centre for Advanced Building and
Environmental Technologies

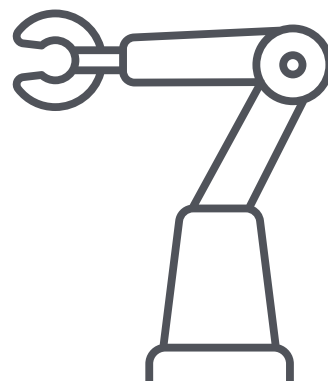
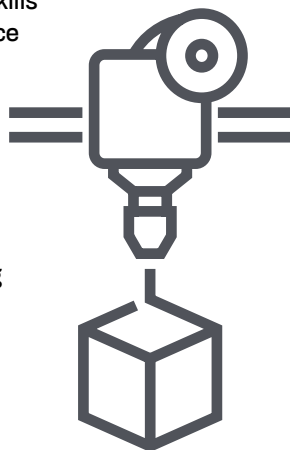
Why partner with Dudley College of Technology?

£12 million

Invested in new centre for Advanced Building Technologies and Construction Skills (Dudley Advance II campus)

£9 million

Invested in new 2,800m² centre for Manufacturing and Engineering Technology (Dudley Advance campus)



Annual turnover over in 2017/18

£41 million

We are one of the UK's major colleges for Further Education

Ofsted rated 2017
Outstanding

Over
4,000
apprentices on
programme 17/18

One of the top colleges nationally

for the number of apprentices that successfully achieve their qualifications

We delivered training to over
12,600 learners
2017/18

Established
since
1862



Dudley Advance II brings first-class construction training facilities to the region, and offers employers the best opportunities to recruit and train a new generation of construction technical apprentices.

A curriculum for the future, based around five key areas:

- Digital technologies - building information modelling (BIM), home automation and building management systems
- Modern methods of constructing - for example, pre-fabricated modular construction techniques
- Fabrication and welding - for off-site production including sheet metal work and welding
- Environmental technologies - sustainable construction methods and green technologies
- Professional and technical upskilling - shorter programmes aimed at upskilling the existing workforce in developing new techniques.



“

This exciting world-class facility will revolutionise construction training. We share Dudley College's vision in helping young people acquire the necessary skills ensuring they are well placed to enter the workforce.

Ian Gardner, Head of Housing Maintenance, Dudley Council

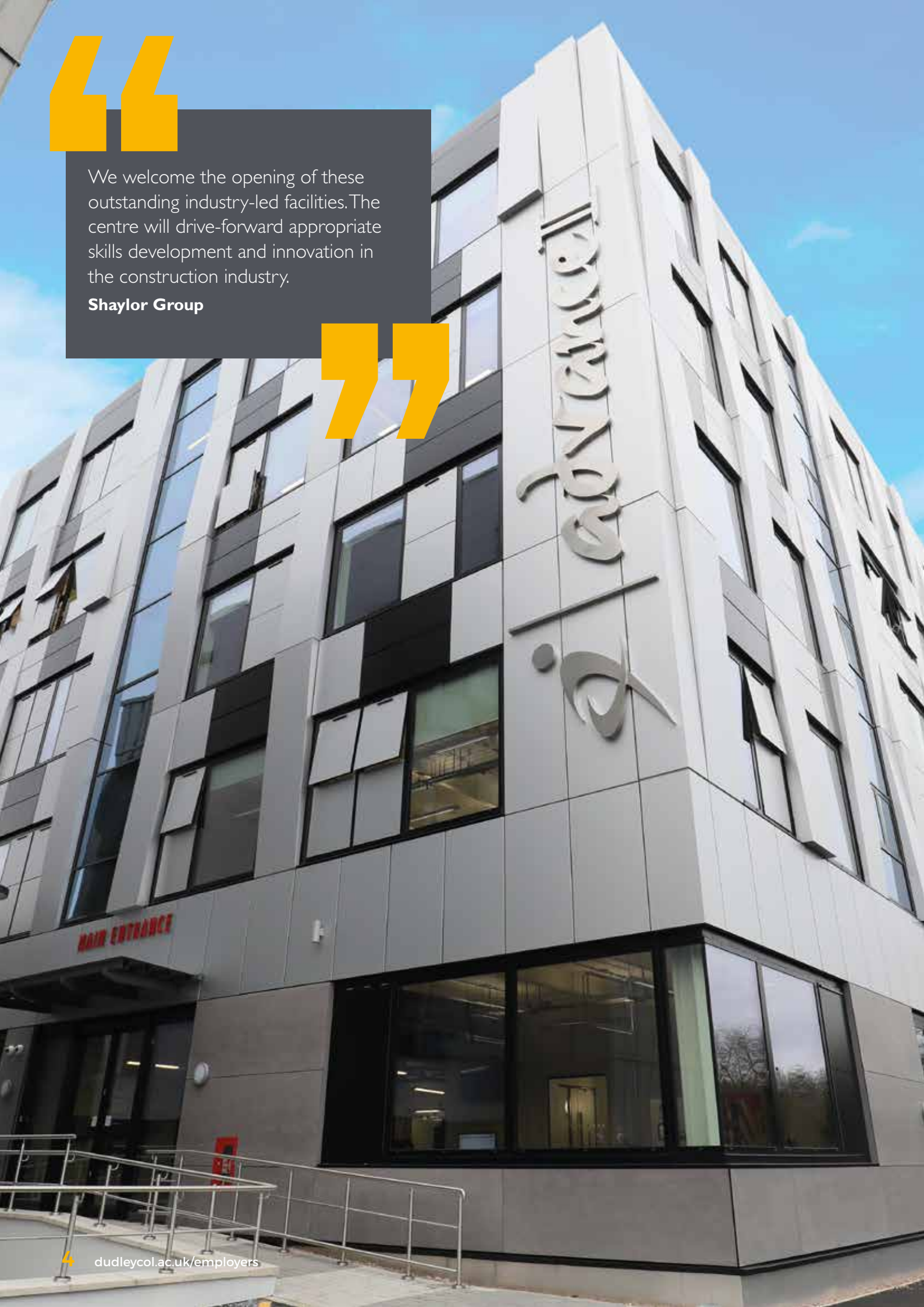
”

“

We welcome the opening of these outstanding industry-led facilities. The centre will drive-forward appropriate skills development and innovation in the construction industry.

Shaylor Group

”





Dudley Advance II provides:

Next generation BIM

The fully immersive virtual reality (VR) environment enables learners to stand inside their BIM and 3D CAD models, using near life-size VR. Learners can easily navigate to complex 3D construction models and BIM data in an accurate and highly realistic built environment, interacting with buildings infrastructure and exploring systems such as heating, ventilation, plumbing and electrical. This allows learners to be exposed to challenging realistic problems, enabling resolution in a safe virtual environment rather than out on site. All Advance II learners will be introduced to this VR technology as part of their learning.

Welding & Fabrication

Offering tailored training for welders and pipefitters to include MIG, TIG, Coded and Pipeline Welding.

Our tutors have a wealth of industrial experience in fabrication and welding. Andy Whitehouse is the current UK World Skills Expert for Fabrication Skills.

Virtual welding area

Simulation environments are great for technical training and augmented reality brings a world of possibilities in the classroom by creating safe simulated environments for training purposes.

Hanger

A stand-out feature of the building is a four-storey high 'hanger' where learners will be taught the practical know-how required for fabricating and assembling buildings using the latest available technologies.

Carbon Friendly Technology Centre

Learners can acquire skills in, among other things, the installation of air source heat pumps and photo-voltaic technologies, and a 'construction manufacturing and fabrication centre' where they will develop their building engineering skills.

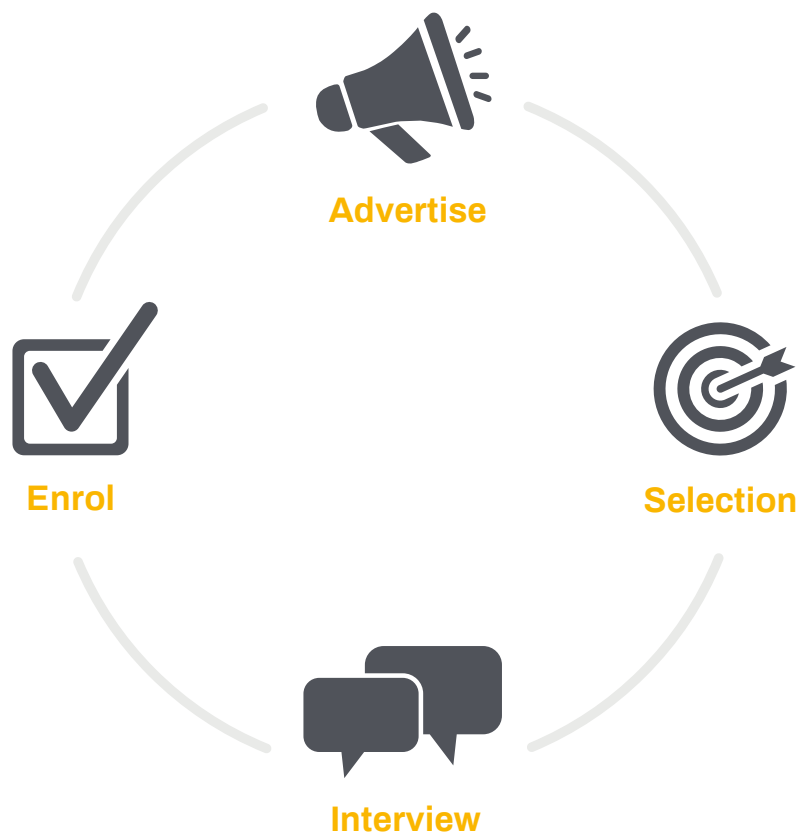
Amada Equipment Area

The Amada equipment will be used by our fabrication and welding and manufacturing apprentices to complete tasks and assessments to awarding body standards as part of their Apprenticeship training. The facility includes:

- Amada CNC Quattro Laser machine which is used for precision cutting of sheet metal profiles
- Amada CNC Punch Press, which uses a turret of various shaped tooling to produce finished sheet metal components
- Amada Break Press, which is used to precision fold various sheet metals into shaped components.

Apprenticeship recruitment service

Free Apprenticeship recruitment service for all levy and non-levy paying employers - a step-by-step guide:



Advertise

We will advertise your vacancy to our own learners and wider afield too, via the National Apprenticeship Service. Our free recruitment service means not only will we advertise your vacancy, but we will also refer pre-selected applications suitable for the role.

Selection

Our team will match and screen potential applicants to your specific needs and job role and will send their details direct to you. We measure candidates against your individual criteria (which could include qualifications such as GCSE English and Mathematics) and make sure they understand the vacancy, the role, the commitment and your company's expectations of them.

Interview

Arranging interviews, particularly for smaller employers who may not have a full-time HR resource, can be a drain on management time, so we can do that for you too! You just have to look over the CVs and agree which candidates you'd like to meet.

Enrol

Leave all the paperwork to us. When your apprentice starts their employment we will enrol them onto the Apprenticeship and the journey to skilled and qualified staff begins.

We find, recruit and train apprentices and offer flexible training solutions, tailored to your specific needs.

Apprenticeships at intermediate, advanced and higher levels to include:

Course	Level
Building Information Modelling (BIM)	3
Fabrication and welding engineering	2+3
Facilities management supervisor	3
Built environment and design	3
Construction contracting operations	3
Civil engineering for technicians	3
Occupational work supervision	3
Building control	3
Geomatics data analysis	3
Town planning technical support	3
Electrical and electronic engineering	2+3
Refrigeration	2+3
Machining utilising PEO units	2
Welding utilising PEO units	2
Electrical installation and maintenance	2+3
Mechanical manufacturing	3
Engineering maintenance	3
Fabrication and welding	3
Materials processing and finishing	3
Engineering technical support	3
Engineering quality	3
Geospatial surveying technician	3
Higher National Certificate / Diploma construction and the built environment	4+5
Higher Apprenticeship construction and building services management.	4+5
Higher Apprenticeship construction site supervision	4+5
Higher Apprenticeship electrical – day release	4+5
Higher Apprenticeship electrical electronic	4+5
Higher Apprenticeship mechanical engineering	4+5



Get in touch!



Call us...
01384 363 808



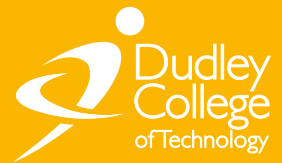
Visit us online...
dudleycol.ac.uk



Email us...
employerservices@dudleycol.ac.uk



Find us...
The Broadway Campus
The Broadway
Dudley
DY1 4AS



**EMPLOYER
SERVICES**



hands-on
thinking
Since 1862